

SRS CLAMPS - TRIANGLE JOINTS

Mid clamps and end clamps are indispensable components in a solar panel installation system, ensuring the secure attachment of panels to the mounting structure. Their primary function is to maintain the panels in place. Here's a brief overview of their roles:

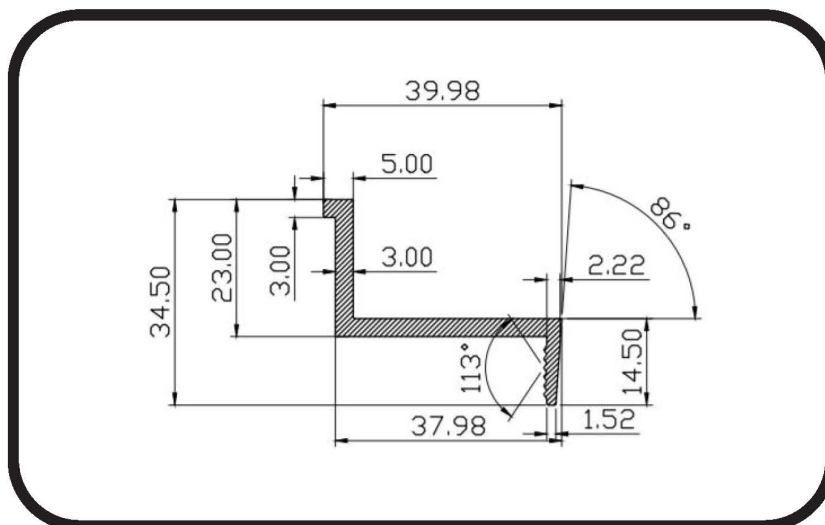
Mid Clamps: These clamps are employed to secure the middle section of each solar panel to the mounting rails. Typically comprising two pieces attached to either side of the panel frame, they are then bolted onto the mounting rail. Mid clamps ensure the stability of solar panels, particularly in areas susceptible to wind and adverse weather conditions.

End Clamps: Similar to mid clamps, end clamps are used to secure the ends of solar panels to the mounting rails. Consisting of two pieces attached to the panel frame and bolted onto the rail, they prevent sliding or shifting, particularly during periods of high winds.

Both mid clamps and end clamps play a critical role in maintaining the stability and security of solar panel systems. Designed to withstand outdoor elements, they provide a reliable, long-term solution for holding solar panels securely in place.



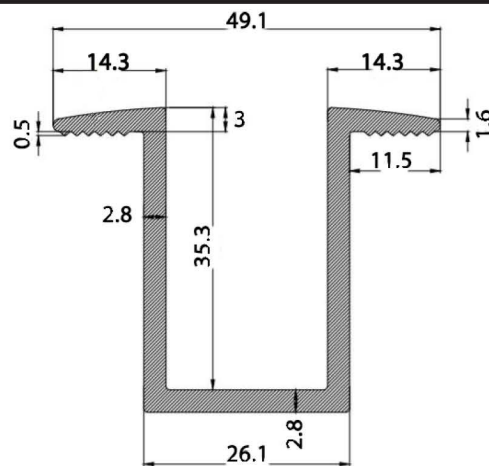
END CLAMP



Name	Size	Material	Fasteners Type	Finishing	Max Wind Speed	Max Snow Load
SRS-End-Clamp	35mm	Aluminum 6063	SUS304 Stainless Steel	Silver Matt Anodized	60m/sec	1.4KN/m ²

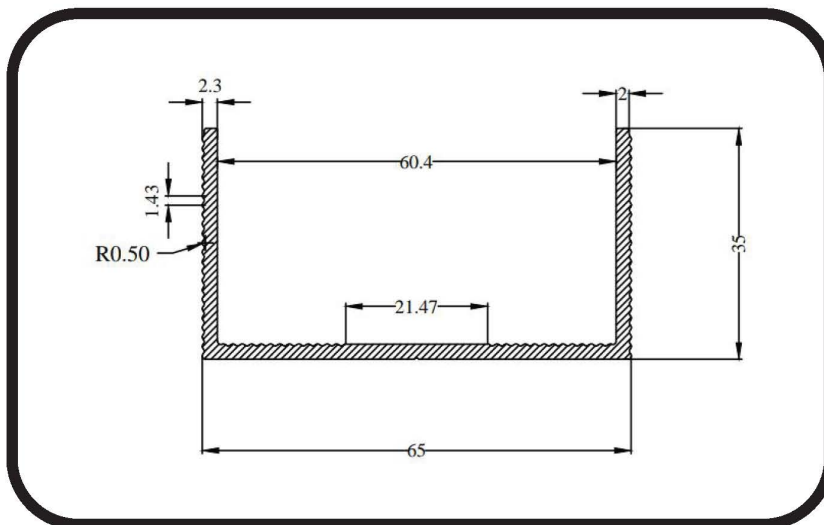
MID CLAMP

MID CLAMP



Name	Size	Material	Fasteners Type	Finishing	Max Wind Speed	Max Snow Load
SRS-Mid-Clamp	35mm	Aluminum 6063	SUS304 Stainless Steel	Silver Matt Anodized	60m/sec	1.4KN/m ²

TRIANGLE JOINT



Name	Size	Material	Fasteners Type	Finishing	Max Wind Speed	Max Snow Load
SRS-Triangle-Joint	40mm	Aluminum 6063	SUS304 Stainless Steel	Silver Matt Anodized	60m/sec	1.4KN/m ²